

Avseal® II

High pressure version - 2961 Series

Material

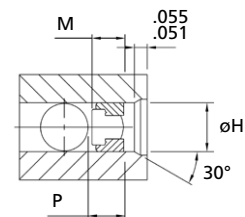
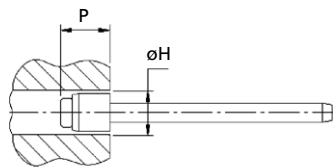
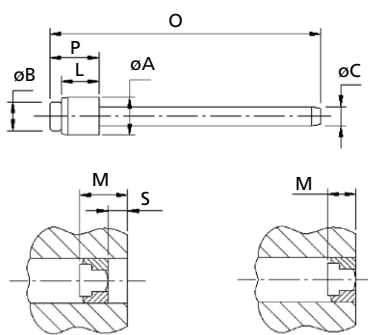
Sleeve: Aluminium alloy

(BS1473/4/5 - 6061/AA6061 EN 573-3 AlMg1SiCu Werkstoff 3.3211)

Stem: Carbon steel, hardened and tempered,

Zinc plated, clear trivalent passivated with top seal

(BS 3111 type 10 DIN 1654 35B2)



Taper hole entry only required for automated assembly.

ø	O max.	øB ref.	øA max.	L max.	øC ref.	øH			P ¹⁾ req.	M ¹⁾		Part No
						min.	max.	rec.		min.	max.	
4.0 mm	1.630 (41.4)	.118 (3.0)	.154 (3.9)	.161 (4.1)	.075 (1.9)	.154 (3.9)	.169 (4.3)	.161 (4.1)	.256 (6.50)	.111 (2.81)	.170 (4.32)	02961-00405
5.0 mm	1.661 (42.2)	.150 (3.8)	.193 (4.9)	.197 (5.0)	.087 (2.2)	.197 (5.0)	.212 (5.4)	.197 (5.0)	.281 (7.14)	.156 (3.95)	.224 (5.70)	02961-00506
6.0 mm	1.972 (50.1)	.177 (4.5)	.232 (5.9)	.236 (6.0)	.102 (2.6)	.236 (6.0)	.251 (6.4)	.236 (6.0)	.336 (8.53)	.170 (4.30)	.324 (8.23)	02961-00607
7.0 mm	2.012 (51.1)	.213 (5.4)	.268 (6.8)	.272 (6.9)	.118 (3.0)	.276 (7.0)	.291 (7.4)	.276 (7.0)	.385 (9.78)	.203 (5.15)	.361 (9.17)	02961-00708
8.0 mm	2.043 (51.9)	.240 (6.1)	.307 (7.8)	.311 (7.9)	.142 (3.6)	.308 (7.8)	.330 (8.4)	.315 (8.0)	.435 (11.05)	.283 (7.18)	.370 (9.41)	02961-00810
9.0 mm	2.087 (53.0)	.272 (6.9)	.346 (8.8)	.335 (8.5)	.154 (3.9)	.347 (8.8)	.385 (9.8)	.354 (9.0)	.500 (12.70)	.301 (7.64)	.387 (9.84)	02961-00911
10.0 mm	2.102 (53.4)	.308 (7.8)	.386 (9.8)	.394 (10.0)	.173 (4.4)	.386 (9.8)	.425 (10.8)	.394 (10.0)	.551 (14.00)	.346 (8.77)	.511 (13.00)	02961-01012
11.0 mm	2.421 (61.5)	.339 (8.6)	.425 (10.8)	.469 (11.9)	.189 (4.8)	.426 (10.8)	.464 (11.8)	.433 (11.0)	.593 (15.07)	TBA ²⁾	.551 (14.00)	02961-01113
12.0 mm	2.472 (62.8)	.370 (9.4)	.465 (11.8)	.453 (11.5)	.209 (5.3)	.465 (11.8)	.503 (12.8)	.472 (12.0)	.620 (15.75)	.420 (10.66)	.572 (14.55)	02961-01215

all dimensions in inch and (mm)

1) Values for use with a flat nose tip (except for 4.0 & 5.0 mm where only stepped nosetips are available):

- Add „S“ = .039 / .079 / .315 (1 mm / 2 mm / 8 mm) to „P“ and „M“ values when a 1 mm / 2 mm / 8 mm extended nose tip is used

2) To be announced