

Technical Data

Low pressure version - 2964 Series

Material

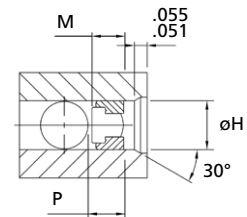
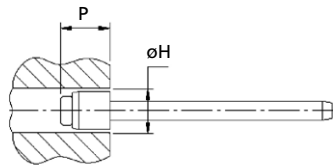
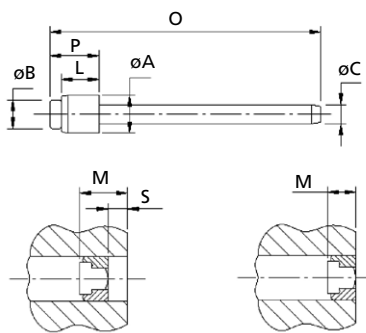
Sleeve: Aluminium alloy

(BS1473/4/5 - 6061/AA6061 EN 573-3 AlMg1SiCu Werkstoff 3.3211)

Stem: Carbon steel, hardened and tempered,

Zinc plated, clear trivalent passivated with top seal

(BS 3111 type 10 DIN 1654 35B2)



Taper hole entry only required for automated assembly.

| ø | O max. | øB ref. | øA max. | L max. | øC ref. | øH | | | P ¹⁾ req. | M ¹⁾ | | Part No |
|---------|-----------------|----------------|----------------|----------------|----------------|----------------|----------------|----------------|-------------------------|-----------------|-----------------|-------------|
| | | | | | | min. | max. | rec. | | min. | max. | |
| 8.0 mm | 2.000 (50.8) | .236 (6.0) | .311 (7.9) | .307 (7.8) | .140 (3.55) | .315 (8.0) | .320 (8.15) | .315 (8.0) | .389 (9.90) | .295 (7.50) | .374 (9.50) | 02910-10790 |
| 9.0 mm | 2.039 (51.8) | .240 (6.1) | .346 (8.8) | .335 (8.5) | .141 (3.58) | .354 (9.0) | .370 (9.4) | .354 (9.0) | .461 (11.71) | .284 (7.19) | .416 (10.57) | 02964-00911 |
| 10.0 mm | 2.071 (52.6) | .276 (7.0) | .386 (9.8) | .374 (9.5) | .154 (3.90) | .394 (10.0) | .409 (10.4) | .402 (10.2) | .514 (13.05) | .347 (8.81) | .451 (11.46) | 02964-01012 |
| 11.0 mm | 2.102 (53.4) | .307 (7.8) | .425 (10.8) | .386 (9.8) | .173 (4.40) | .433 (11.0) | .448 (11.4) | .441 (11.2) | .538 (13.66) | .371 (9.41) | .476 (12.11) | 02964-01113 |
| 12.0 mm | 2.102 (53.4) | .307 (7.8) | .465 (11.8) | .374 (9.5) | .173 (4.40) | .472 (12.0) | .488 (12.4) | .480 (12.2) | .529 (13.43) | .373 (9.45) | .470 (11.96) | 02964-01215 |
| 13.0 mm | 2.441 (62.0) | .339 (8.6) | .504 (12.8) | .406 (10.3) | .189 (4.80) | .512 (13.0) | .527 (13.4) | .520 (13.2) | .580 (14.74) | .396 (10.04) | .492 (12.51) | 02964-01315 |
| 14.0 mm | 2.472 (62.8) | .370 (9.4) | .543 (13.8) | .433 (11.0) | .209 (5.30) | .551 (14.0) | .566 (14.4) | .559 (14.2) | .616 (15.65) | .461 (11.70) | .546 (13.87) | 02964-01415 |
| 16.0 mm | 2.551 (64.8) | .433 (11.0) | .622 (15.8) | .496 (12.6) | .236 (6.00) | .630 (16.0) | .645 (16.4) | .638 (16.2) | .710 (18.04) | .547 (13.88) | .629 (16.00) | 02964-01620 |

all dimensions in inch and (mm)

1) Values for use with a flat nose tip (except for 4.0 & 5.0 mm where only stepped nosetips are available):

- Add „S“ = .039 / .079 / .315 (1 mm / 2 mm / 8 mm) to „P“ and „M“ values when a 1 mm / 2 mm / 8 mm extended nose tip is used

2) To be announced